

Manual position

Trip Test
1 Only in manual position

1 Do not operate when product is under trip condition

Automatic position

Click!

LAD7C1
D09/12/18

LAD7C2
D25/32/38

1

2

3

www.schneider-electric.com/site/home

1672545*

1 motor

2

1

LAD7B205

LR.D22L
LR.D32L

97 98
95 96 RESET

95 96 STOP

HRB42813

Wire Size (mm ²)	Wire Size (in ²)	Terminal Size (mm)	Terminal Size (in)
1.25	8	1.7	15
2.5	10	1.7	15
4	10	3/8	15
6	10	3/8	15
10	10	3/8	15
16	10	3/8	15

LR.D04L to LR.D21L

Wire Size (mm ²)	Wire Size (in ²)	Terminal Size (mm)	Terminal Size (in)
1.25	8	1.7	15
2.5	10	1.7	15
4	10	3/8	15
6	10	3/8	15
10	10	3/8	15
16	10	3/8	15

LR.D22L to LR.D32L

Wire Size (mm ²)	Wire Size (in ²)	Terminal Size (mm)	Terminal Size (in)
1.25	8	1.7	15
2.5	10	1.7	15
4	10	3/8	15
6	10	3/8	15
10	10	3/8	15
16	10	3/8	15

LR.D04L6 to LR.D21L6

Wire Size (mm ²)	Wire Size (in ²)	Terminal Size (mm)	Terminal Size (in)
1.25	8	1.7	15
2.5	10	1.7	15
4	10	3/8	15
6	10	3/8	15
10	10	3/8	15
16	10	3/8	15

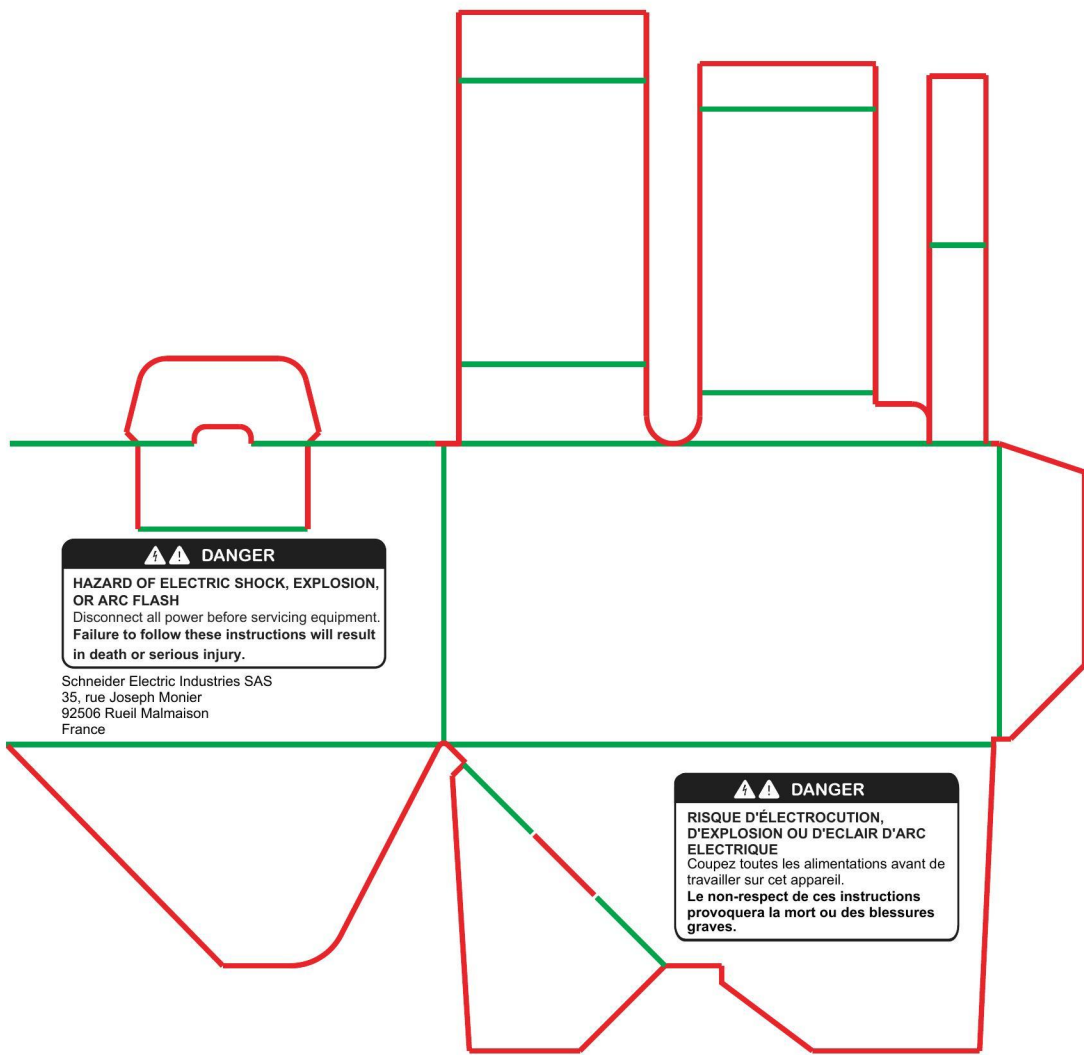
LR.D22L6 to LR.D32L6

⚠️ PELIGRO
PELIGRO DE DESCARGA ELÉCTRICA, EXPLOSIÓN O ARCO ELÉCTRICO
 Desconecte todas las alimentaciones antes de manipular el producto.
 Si no se siguen estas instrucciones provocará lesiones graves o incluso la muerte.

HRB42813 A05
11/2018

1/2

RSP Supply - 1-888-532-2706 - <https://www.RSPSupply.com>
 See the product details here



⚠ ⚠ DANGER
**HAZARD OF ELECTRIC SHOCK, EXPLOSION,
OR ARC FLASH**
Disconnect all power before servicing equipment.
Failure to follow these instructions will result
in death or serious injury.

Schneider Electric Industries SAS
35, rue Joseph Monier
92506 Rueil Malmaison
France

⚠ ⚠ DANGER
**RISQUE D'ÉLECTROCUTION,
D'EXPLOSION OU D'ÉCLAIR D'ARC
ÉLECTRIQUE**
Coupez toutes les alimentations avant de
travailler sur cet appareil.
Le non-respect de ces instructions
provoquera la mort ou des blessures
graves.

Schneider Electric Industries SAS
35, rue Joseph Monier
CS 30323
F - 92506 Rueil Malmaison Cedex

www.schneider-electric.com

HRB42813 A05

© 2018 Schneider Electric - All rights reserved.

2/2